

Paceform® Permanent Formwork System

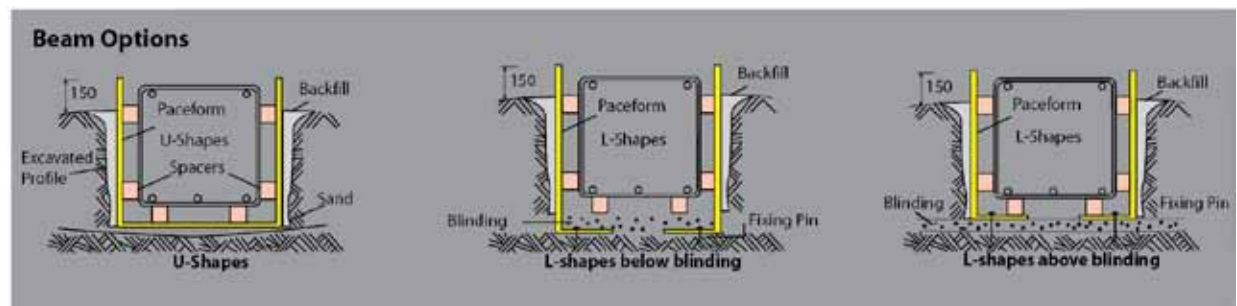
Paceform® is a steel mesh reinforced polyethylene shuttering system for use in foundations.

Lightweight and easy to use, Paceform® can save time and money compared with traditional methods.

- Supplied preformed to specific requirements
- Can eliminate blinding concrete
- Possible to reduce excavation width and therefore spoil removal
- Quick to install, speeding up the construction process
- No need to remove the formwork – one less activity
- Full take-off/scheduling service available
- Site support can be provided



Paceform® can be supplied as 'U' shapes to eliminate the blinding concrete, or as 'L' shapes to the sides only. This option may prove more economical on wider sections.



Installation Details

Excavate foundations to correct line and depth. Where the base has sharp projections, a layer of compacted sand will help prevent damage to the Paceform®. The trench width should be considered in relation to safe working, but it should be possible to keep this to a minimum as no formwork props are required.

Position the Paceform® units using a 100mm overlap which can be secured by tying wire. Where beams abut deeper bases, the side can be easily cut to suit. Tape can be used to seal any gaps that might allow grout loss.

After fixing all units, the reinforcement can be positioned, ensuring that sufficient spacers are used to maintain the cover. The trench can then be backfilled using suitable material, and taking care not to cause too much distortion.

If Paceform® is to be used without the support of the ground, a system of ties can be introduced to provide stability. Please ask for guidance on this.



Express
Reinforcements Ltd.

For more information, please contact your local depot...

General Enquiries

Commercial: commercial@expressreinforcements.co.uk

Technical: technical@expressreinforcements.co.uk

Glamorgan (Head Office)

Eaglesbush Works
Milland Road
Neath
West Glamorgan SA11 1NJ
Tel: 01639 645555
Fax: 01639 645558
neath@expressreinforcements.co.uk

Tyne and Wear

Hannington Works
Longrigg
Swalwell
Tyne and Wear NE16 3AS
Tel: 0191 4956060
Fax: 0191 4956078
newcastle@expressreinforcements.co.uk

Midlands

Collier Close
Brownhills
West Midlands WS8 7EU
Tel: 01543 453359
Fax: 01543 454485
brownhills@expressreinforcements.co.uk

Surrey

Fordwater Trading Estate
Ford Road
Chertsey
Surrey KT16 8HG
Tel: 01932 579600
Fax: 01932 579601
chertsey@expressreinforcements.co.uk

Essex

Basepoint Business Centre
CEME Campus
Marsh Way
Rainham
Essex RM13 8EU
rainham@expressreinforcements.co.uk